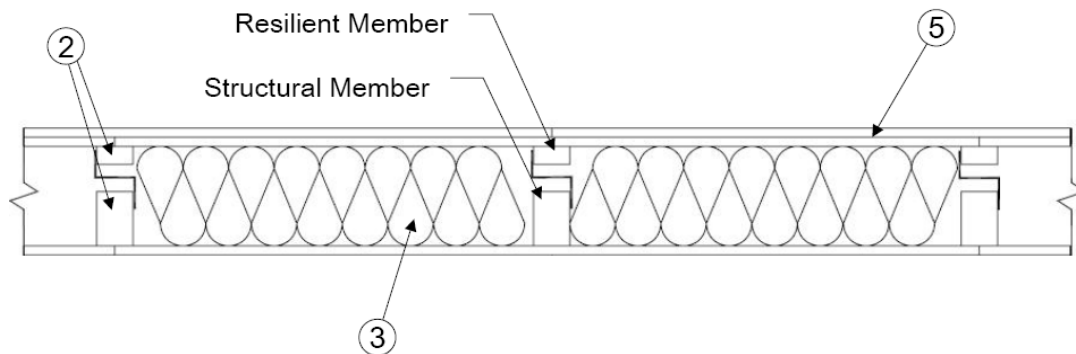

BXUV.U368

Fire Resistance Ratings - ANSI/UL 263

Fire Resistance Ratings - ANSI/UL 263

Design No. U368
December 07, 2004

Bearing Wall Rating - 1 Hr



1. **Floor and Ceiling Plates** — (Not Shown) - Two nom. 2 x 4 in., when using 2 x 4 in. studs (Item 2) or two nom 2 x 6 in., when using nom. 2 x 6 in. studs (Item 2), placed at the top of the wall and one, respectively, placed at the bottom of the wall. Structure to be effectively fire stopped at top and bottom of wall.

2. **Structural Wood Members*** — Pre-fabricated engineered lumber structural and acoustical studs consisting of a structural member and resilient member attached together with clips. Min. nom. 2 x 4 in. or 2 x 6 in. studs spaced 16 in. OC or 24 in. OC.

OWENS CORNING — QuietZone™ Acoustic Wall Framing

3. **Batts and Blankets*** — Glass fiber insulation, min. 3-1/2 in. thick for nom. 2 x 4 in. construction and min. 5-1/2 in. thick for nom. 2 x 6 in. construction, secured to the studs, on either structural member or resilient member, with staples spaced 12 in. OC when faced batts are used. When unfaced batts are used, insulation is to be friction fit into the wall cavity. Min. density of 0.45 pcf. 15 in. wide insulation to be used when studs (Item 2) are spaced 16 in. OC and 23 in. wide insulation to be used when studs (Item 2) are spaced 24 in. OC.

OWENS CORNING — QuietZone® Acoustic Batt

4. Caulking and Sealants (Optional - Not Shown) — Caulking is optional for fire resistance, but is required for acoustical performance. A bead of acoustical sealant applied along the top and bottom plates of the wall, on resilient member side, before gypsum board (Item 5) attachment. Caulking is to fill 1/8 in. gap between top and bottom plates (Item 1) and resilient member on the resilient member side of the wall..

5. Gypsum Board* — For resilient member two layers of nom. 5/8 in. thick boards, installed vertically or horizontally. For structural member one layer of nom. 5/8 in. thick boards, installed vertically or horizontally. Gypsum board joints to be staggered and vertical joints to be backed by studs (Item 2). For resilient member the gypsum board joints to be staggered and base layer vertical joints of gypsum board to be backed by studs (Item 2). Base layer attached to the resilient member using min. 1-1/4 in. long Type S bugle-head screws and min. 1-7/8 in. for the face layer. Screws for base and face layers to be spaced max of 8 in. OC along the perimeter of the board and in the field. Face layer of gypsum board joints to be staggered from base layer. Screws located a max. of 1-1/2 in. from side joints and 1/2 in. from end joints for the base and face layers of gypsum board installed horizontally. Screws located a max 1/2 in. from side joints and 1-1/2 in. from end joints for the base and face layers of gypsum board installed vertically. No screws to be located along the top and bottom plates on the resilient member side of the wall for either, the base or face layers of gypsum board. Max screws lengths of 1-1/4 in. long and 2 in. long when screwing into the resilient member side of the studs for the nom. 2 x 4 studs and nom. 2 x 6 studs, respectively. Single layer attached to the structural member using min. 1-1/4 in. long Type S bugle-head screws. Screws for single layer to be spaced max of 8 in. OC along the perimeter of the board and in the field. Screws located a max. of 1-1/2 in. from side joints and 1/2 in. end joints for the single layer of gypsum board installed horizontally. Screws located a max. of 1-1/2 in. from side joints and 1/2 in. from end joints for the base and face layers of gypsum board installed horizontally. Screws located a max 1/2 in. from side joints and 1-1/2 in. from end joints for the base and face layers of gypsum board installed vertically.

AMERICAN GYPSUM CO — Types AGX-1, AGX-2, AGX-3, AGX-7, AGX-11 or AG-C.

CANADIAN GYPSUM COMPANY — Types C, IP-X1, IP-X2, SCX, SHX, WRC or WRX.

G-P GYPSUM CORP, SUB OF

GEORGIA-PACIFIC CORP — Types 5, 6, 9, C, DGG, GPFS1, GPFS2 or GPFS6.

LAFARGE NORTH AMERICA INC — Type LGFC2, LGFC3, LGFC6, LGFC-C, LGFC6A, LGFC2A, or LGFC-C/A.

NATIONAL GYPSUM SERVICES CO — Type FSK, FSK-G, FSW, FSW-2, FSW-3, FSW-5, or FSW-G.

STANDARD GYPSUM L L C — Type SG-C

TEMPLE-INLAND FOREST PRODUCTS CORP — Type TG-C

UNITED STATES GYPSUM CO

UNITED STATES GYPSUM CO — Types C, IP-X1, IP-X2, SCX, SHX, WRC or WRX.

USG MEXICO S A DE C V — Types C, IP-X1, IP-X2, SCX, SHX, WRC or WRX.

5A. Gypsum Board* — As an alternate to Item 5, two layers of nom. 1/2 in. thick boards, installed vertically or horizontally. Gypsum board joints to be staggered and base layer vertical joints of gypsum board to be backed by studs (Item 2). Base layer attached to either, the resilient member or structural member (Item 2). Base layer attached to either, the resilient member or structural member (Item 2) using min. 1-1/4 in. long Type S bugle-head screws and min. 1-7/8 in. for the face layer. Screws for base layer and face layer to be spaced max of 8 in. OC along the perimeter of the board and in the field. Face layer of gypsum board joints to be staggered from base layer. Screws located a min. of 1-1/2 in. from side joints and 1/2 in. from end joints for the base and face layers of gypsum board installed horizontally. Screws located a min. of 1/2 in. from side joints and 1-1/2 in. from end joints for the base and face layers of gypsum board installed vertically. No screws to be located along the top and bottom plates on the resilient member side of the wall for either, the base or face layers of gypsum board. Max screw lengths of 1-1/4 in. long and 2 in. long when screwing into the resilient member side of the studs for the 2 x 4 nom. and 2 x 6 nom. studs, respectively.

AMERICAN GYPSUM CO — Type AG-C.

CANADIAN GYPSUM COMPANY — Type C or IP-X2.

G-P GYPSUM CORP, SUB OF

GEORGIA-PACIFIC CORP — Type 5 or C.

LAFARGE NORTH AMERICA INC — Type LGFC-C or LGFC-C/A

NATIONAL GYPSUM SERVICES CO — Type FSW-G.

STANDARD GYPSUM L L C — Type SG-C

TEMPLE-INLAND FOREST PRODUCTS CORP — Type TG-C

UNITED STATES GYPSUM CO — Type C or IP-X2.

USG MEXICO S A DE C V — Type C or IP-X2.

6. Finishing System - (Not Shown) — Vinyl, dry or premixed joint compound, applied in two coats to joints and screw heads of face layer of gypsum board; paper tape, 2 in. wide, embedded in first layer of compound over all joints. As an alternate, nom. 3/32 in. thick veneer plaster may be applied to the entire surface of the gypsum board.

*Bearing the UL Classification Mark